



The Global Language of Business

GS1 Healthcare US

# Healthcare Quick Start Guide

For implementing the GS1 Global Data Synchronization Network (GDSN) in Healthcare

If your company is looking to access and improve your trading partner data and share accurate, reliable, complete and timely data about the products that you trade or use, this Quick Start Guide will help you get started today.

It provides a brief overview of the steps and resources needed for a successful implementation of the GS1 Global Data Synchronization Network™ (GDSN®) for medical device and/or pharmaceutical products. This Quick Start Guide serves as a starting point to other GS1 Healthcare US GDSN documents.

## Implementation Steps for GDSN in Healthcare

### 1. Document Your Use Case

Manufacturers, labelers, wholesale distributors, and healthcare providers can all benefit from accurate, complete, and timely data across a myriad of supply chain business processes. It is important to understand the opportunities that can be addressed by implementing GDSN as a trusted source of healthcare product data. All core business processes require at least some basic information about the healthcare products being traded and used throughout the supply chain. From new product setup, through order-to-cash, through patient use and, ultimately, for analytics and decision making, information about healthcare products is required. And what specific information is required will vary based on the process being undertaken. Establishing baseline metrics in the areas where improvement could be gained is essential. These baselines will help an organization identify areas of need and develop a roadmap for product data requirements.

Once there is a business process roadmap then each use case becomes an opportunity to access those pieces of data about healthcare products that are required to support the use case.



### GS1 Healthcare US

GS1 Healthcare US® is an industry group focused on driving the adoption and implementation of GS1 Standards in the healthcare industry to improve patient safety and supply chain efficiency.

GS1 Healthcare US brings together members from all segments of the healthcare industry to address the supply chain issues that most impact healthcare in the U.S.

## 2. Establish a Project Team

A cross-functional project team is crucial for successfully implementing GDSN in healthcare. Consider representation from the following organizational areas:

- Supply Chain
- Information Technology
- Data Governance, Master Data Management
- Operations and Business Process Experts
- Office of Information Security
- Customer Service
- Quality Assurance
- Public Relations
- Sales and Sales Operations
- R & D, Packaging, and Product Development
- Specs and Labeling
- Legal — Service Contracts, System Integrity, etc.
- Regulatory
- Clinical
- Product Management
- Marketing

Inform other trading partners of the effort you are undertaking. Manufacturers, group purchasing organizations (GPOs), distributors/wholesalers, providers/end users, and solution providers all need to be aware of, and potentially involved in, the effort as they will likely be impacted by it.

## 3. Engage Your Data Pool Provider

Choosing a data pool provider, if your organization doesn't already have one, is an important decision. In many instances other areas of your organization may already be providing, or sourcing data, via GDSN. Areas such as housekeeping or foodservice within a hospital provider, for example, may already have established GDSN relationships with their trading partners. Manufacturers that have a strong retail presence within certain product divisions may already be sharing product data via GDSN to their retail trading partners. It's a great time to find out if these relationships already exist and to leverage the experiences of these colleagues.

If you are a member of a GPO, then consider that they may also be able to provide assistance or direction on choosing a data pool. It is important to consider your long-term strategy for sharing data with your trading partners. Do not limit your evaluation of data pool services to just those that support one aspect of your transactional or operational areas.

GDSN data pools must be certified and capable of the sharing of data via all GDSN-certified data pools. There is no requirement for you to select the same data pool that your key trading partners are using. All certified data pools are able to interact with all other certified data pools through GDSN. However, most data pool providers offer services or tools that add industry-specific value to the base GDSN service, so, it is important to understand your needs and develop a request for proposal (RFP) that can be presented to interested parties. This will help establish a common baseline for the services your organization requires. If you are unsure of what to ask, consider the [How to Select a GDSN-certified Data Pool](#) resource.

## 4. Understand and Define Required Attributes

Part of your business process roadmap from Step 1 above should include an assessment of each business process. For each business process, your project team will need to identify and define the data elements necessary to support that process. You will probably see that there is a core set of product attributes, which cross many of your roadmap processes. It is also likely that these common data elements will be part of the recommended "core" set of data elements for U.S. healthcare trading partners. (See [Creating the Case for Trusted Data - Attribute Lists and Implementation Insights from Three Healthcare Business Process Cases Using GDSN.](#)) It is the recommendation of the GS1 Healthcare US GDSN Vital Attributes Workgroup that everyone who reads this Quick Start Guide also review this complementary resource as well as the other resources cited.

## 5. Understand and Define Technology Mapping Requirements

Determine your organization's technology "readiness" for implementation and use of GS1 Global Trade Item Numbers (GTINs) and their associated data elements, including the existence and accurate definitions of placeholders in item master files and downstream business systems.

Your organization, as the initiating entity, should provide a recommended process map to the trading partners with whom you intend to engage. Trading partners should agree on the basic outline of the process and data before GTINs and associated attributes are shared. Multiple maps should be considered, including:

- Business process maps (see examples of process maps at the end of this guide)
- List of the products in play and the required data elements, including the product hierarchies
- Understand how data is moved internally between technology systems (Item Masters, Enterprise Resource Planning (ERP), Clinical Inventory Systems, Electronic Health Records (EHRs), Billing Systems, and Supply Chain/ Inventory Systems)

- Maps of the flow of information between trading partners throughout the impacted business process including any forms of automated data sharing, such as Electronic Data Interchange (EDI) or GDSN (Manufacturer, Wholesaler/Distributor, Healthcare Provider, Ambulatory Facilities, and GPO).

The degree of detail associated with each map can vary and should be discussed during the project initiation phase.

## 6. Identify and Connect: Data Source and Data Recipient Global Location Number (GLN) “Handshake”

Identify the key trading partners with whom your organization will want to share data initially. This may be your largest trading partner or you may choose to start with a smaller, lower volume trading partner first. The choice is yours. To share data via GDSN both the data source and the data recipient will need to establish and communicate each organization’s GLN, which serves as the entity identifier for the data messages from the “publisher” (data source) to the “subscriber” (data recipient). The GLN uniquely identifies the data source and the data recipient and forms the basis for “opening the door” to the data to be shared between the two entities.

Share GLNs with your trading partners and with your data pools so that a messaging “handshake” can be done to ensure the flow of data.

## 7. Publish and Subscribe With Test Data

Synchronization between trading partners is essential for using GDSN to share data. It is recommended that trading partners start out by sharing a minimum set of products in a test environment\* to work out any bugs on a limited basis before sharing large files.

- Experiment on a single business process with one or two business partners.
- Start small to avoid disrupting your day-to-day process.

## 8. Establish Steady State—SOPs for Data Sharing and Maintenance

Synchronizing data sharing via GDSN is not a “once and done” exercise. Standard Operating Procedures (SOPs) should be established for the ongoing maintenance and timely sharing of product information. SOPs should include periodic audits of data to ensure that internal data management practices are resulting in complete and accurate data being shared with trading partners or internally across various systems.

### Key Resources

How to Choose a Data Pool - [https://www.gs1us.org/documents?Command=Core\\_Download&EntryId=161](https://www.gs1us.org/documents?Command=Core_Download&EntryId=161)

Healthcare Supplier Toolkit for GDSN - [https://www.gs1us.org/documents?Command=Core\\_Download&EntryId=311](https://www.gs1us.org/documents?Command=Core_Download&EntryId=311)

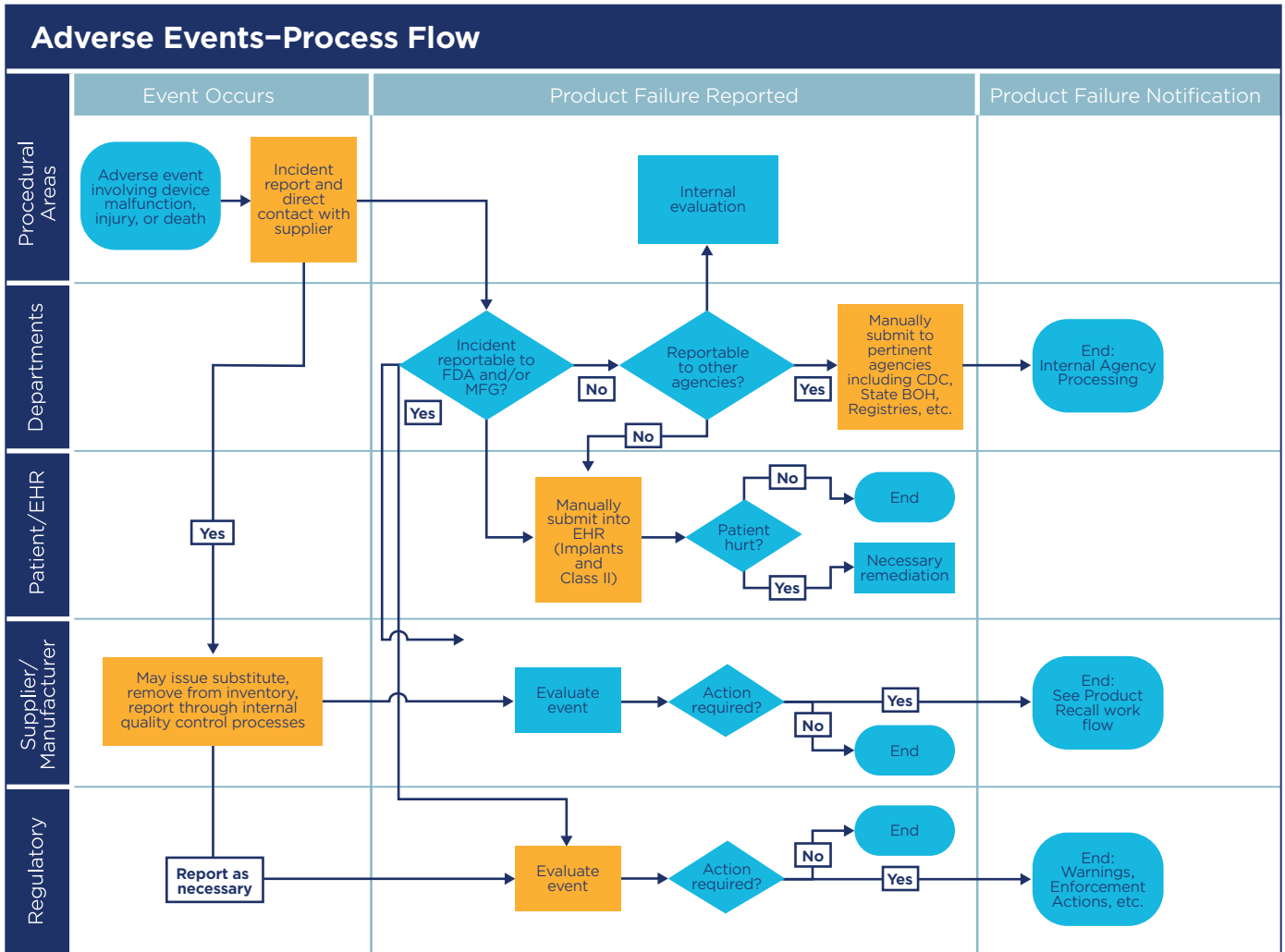
Healthcare Provider Toolkit for GDSN - [https://www.gs1us.org/documents?Command=Core\\_Download&EntryId=636](https://www.gs1us.org/documents?Command=Core_Download&EntryId=636)

Business Process Map of GDSN Healthcare Attributes to Hospital Processes - [https://www.gs1us.org/documents?Command=Core\\_Download&EntryId=633](https://www.gs1us.org/documents?Command=Core_Download&EntryId=633)

\*Since test environments are sometimes not full “copies” of true production environments, not all data pool test environments are “linked.” It is suggested that you confirm the compatibility and use of test environments across the data sharing partners during this step.

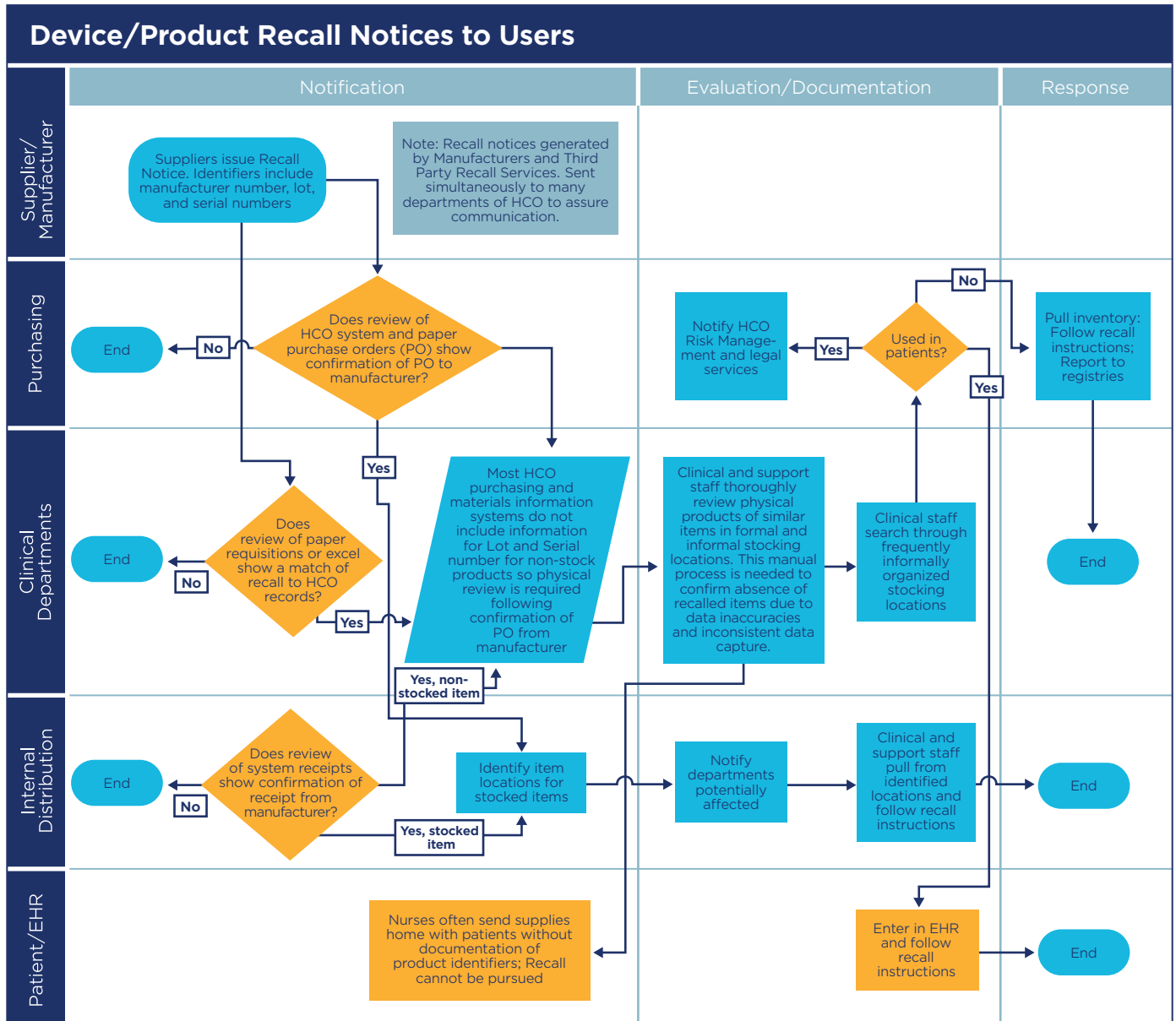
## Process Map Examples

Figure 1: Example - Adverse Events



These business process flow diagrams are meant to be sample illustrations of a process map. They are not meant to be interpreted as exact instructions.

Figure 2: Example - Product Recalls



These business process flow diagrams are meant to be sample illustrations of a process map. They are not meant to be interpreted as exact instructions.

## Proprietary Statement

This document contains proprietary information of GS1 US. Such proprietary information may not be changed for use with any other parties for any other purpose without the expressed written permission of GS1 US.

## Improvements

Improvements and changes are periodically made to publications by GS1 US. All material is subject to change without notice. Please refer to GS1 US website for the most current publication available.

## Disclaimer

Except as may be otherwise indicated in specific documents within this publication, you are authorized to view documents within this publication, subject to the following:

1. You agree to retain all copyright and other proprietary notices on every copy you make.
2. Some documents may contain other proprietary notices and copyright information relating to that document. You agree that GS1 US has not conferred by implication, estoppels, or otherwise any license or right under any patent, trademark, or copyright (except as expressly provided above) of GS1 US or of any third party.

This publication is provided “as is” without warranty of any kind, either express or implied, including, but not limited to, the implied warranties of merchantability, fitness for a particular purpose, or non-infringement. Any GS1 US publication may include technical inaccuracies or typographical errors. GS1 US assumes no responsibility for and disclaims all liability for any errors or omissions in this publication or in other documents which are referred to within or linked to this publication. Some jurisdictions do not allow the exclusion of implied warranties, so the above exclusion may not apply to you.

Several products and company names mentioned herein may be trademarks and/or registered trademarks of their respective companies. GS1 US does not, by promulgating this document on behalf of the parties involved in the creation of this document, represent that any methods, products, and/or systems discussed or recommended in the document do not violate the intellectual property rights of any third party. GS1 US has not performed a search to determine what intellectual property may be infringed by an implementation of any strategies or suggestions included in this document. GS1 US hereby disclaims any liability for any party's infringement of intellectual property rights that arise as a result of any implementation of strategies or suggestions included in this document.

This publication may be distributed internationally and may contain references to GS1 US products, programs, and services that have not been announced in your country. These references do not imply that GS1 US intends to announce such products, programs, or services in your country.

GS1 US shall not be liable for any consequential, special, indirect, incidental, liquidated, exemplary, or punitive damages of any kind or nature whatsoever, or any lost income or profits, under any theory of liability, arising out of the use of this publication or any content herein, even if advised of the possibility of such loss or damage or if such loss or damage could have been reasonably foreseen.

GS1 US HEREBY DISCLAIMS, AND YOU HEREBY EXPRESSLY RELEASE GS1 US FROM, ANY AND ALL LIABILITY RELATING TO YOUR COMPLIANCE WITH REGULATORY STANDARDS AND LAWS, INCLUDING ALL RULES AND REGULATIONS PROMULGATED THEREUNDER. GS1 US MAKES NO WARRANTIES OF ANY KIND RELATING TO THE SUITABILITY OF THE GS1 STANDARDS AND THE SPECIFIC DOCUMENTS WITHIN THIS PUBLICATION TO COMPLY WITH ANY REGULATORY STANDARDS, LAWS, RULES AND REGULATIONS. ALL INFORMATION AND SERVICES ARE PROVIDED “AS IS.”

\*GS1 US employees are not representatives or agents of the U.S. FDA, and the content of this publication has not been reviewed, approved, or authorized by the U.S. FDA. The following information contained herein is for informational purposes only as a convenience, and is not legal advice or a substitute for legal counsel. GS1 US Inc. assumes no liability for the use or interpretation of the information contained herein.

## No Liability for Consequential Damage

In no event shall GS1 US or anyone else involved in the creation, production, or delivery of the accompanying documentation be liable for any damages whatsoever (including, without limitation, damages for loss of business profits, business interruption, loss of business information, or other loss) arising out of the use of or the results of use of or inability to use such documentation, even if GS1 US has been advised of the possibility of such damages.

## IAPMO

In this publication, the letters “U.P.C.” are used solely as an abbreviation for the “Universal Product Code” which is a product identification system. They do not refer to the UPC, which is a federally registered certification mark of the International Association of Plumbing and Mechanical Officials (IAPMO) to certify compliance with a Uniform Plumbing Code as authorized by IAPMO.

\*If applicable

## GS1 US Corporate Headquarters

Princeton South Corporate Center, 300 Charles Ewing Boulevard  
Ewing, NJ 08628 USA  
T +1 937.435.3870 | E info@gs1us.org  
[www.gs1us.org](http://www.gs1us.org)

## Connect With Us

